



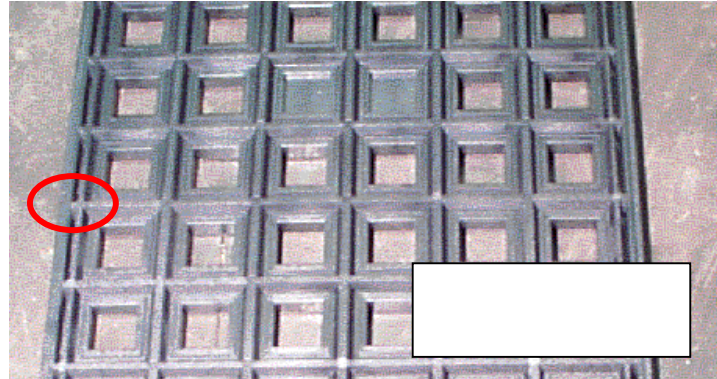
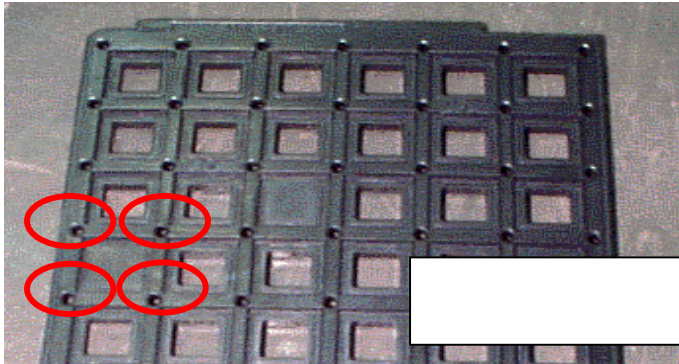
电子元器件系列(中国.厦门) China.Xiamen
www.rf-china.com RF-Micom co.,Ltd

Email:sales@rf-china.com

Telephone:0086-592-5713956 Fax:5201617

Existing Tray (Shinko) for
80/100 lead

New Tray (AMKOR) for
80/100 lead



Customer Impact of Change and Recommended Action:

Due to the dimension changes noted above, Intel recommends that customers order mechanical samples and run their own mechanical evaluations to determine impact on fit of the devices.

Products Affected / Intel Ordering Codes:

Component Products Table

Pre-Conversion Product Code	Pre-Conversion Spec/ROM	Pre-Conversion MM#	Post-Conversion Product Code	Post-Conversion Spec/ROM	Post-Conversion MM#
S80960SA16		803843			
S80296SA40		806832			
S80296SA50		806844			
SJS150		830074			
TS80C186EC13		808820			
S80L186EC16		808881			
TS80C186EC20		802945			
S80C186EC25		802957			
S80C186XL12		803063			
TS80C186XL12		803097			
S80C186XL20		803199			
TS80C186XL20		803242			
S80C186XL25		803269			
TS80C188EC13		803632			
TS80C188EC20		803650			
S80C188EC25		803664			
TS80L188EC13		808882			
S80C188XL25		808831			
S80C188XL20		803850			
S80C188XL12		803759			
TS80C188XL20		803878			
TS80C188XL12		803806			
S80C196KB16		804079			
S80C196KC20		804117			

Pre-Conversion Product Code	Pre-Conversion Spec/ROM	Pre-Conversion MM#	Post-Conversion Product Code	Post-Conversion Spec/ROM	Post-Conversion MM#
S80C31BH116	S F88	809486			
TS80C31BH116	S F88	809489			
S80C31BH24	S F88	811520			
S80C32116	S F88	809516			
TS80C32116	S F88	809519			
S80C3224	S F88	810024			
S82C42PC12.5	R 7107	804641			
S80C4212.5	R 2537	805384			
S80C4212.5	R 7026	805396			
S80C4212.5	R OM	805404			
S87C4212.5		804133			
S82C42PC12.5		815126			
S80C4212.5	R 7007	812413			
S80C4212.5	R 7008	812414			
S80C4212.5	R 7131	812416			
S82C42PD12.5	R 7093	812436			
S82C42PE12.5	S U007	812437			
S80C4212.5	R 1754	837185			
S80C4212.5	R 1745	847394			
S80C51BH116	R 1765	847401			
S80C51BH116	R 1772	838179			
S80C51BH12	R 1512	821473			
S80C51BH12	R 1406	811528			
S80C51BH116	R OM	804020			
S80C51BH116	R 4006	803880			
S80C51BH2424	R OM	804088			
TS80C51FA16	S F88	810998			
S80C51FA116	S F88	809572			
S80C51FA24	S F88	809582			
S80C52116	R OM	805480			
TS80C5216	R OM	805508			
S80C5224	R OM	805632			
S80C52116	R 9283	847404			
S80C5412	R 5196	814092			
S80C5412	R 5197	814099			
TS80C54116	R OM	805906			
S80C54116	R OM	810300			
S8250320		806140			
S82562EH		829047			
S83C196KB16	R 7176	827469			
S83C196KB16	R 0085	807303			
S83C196KB16	R OM	808503			
S83C196MC16	R OM	828957			
S83C196MD16	R OM	828958			
S83C196MH16	R OM	828978			
S83C196MH16	R 1840	849291			
LS83C51FA116	R OM	808514			

Pre-Conversion Product Code	Pre-Conversion Spec/ROM	Pre-Conversion MM#	Post-Conversion Product Code	Post-Conversion Spec/ROM	Post-Conversion MM#
S83C51FA116	R OM	808516			
TS83C51FA116	R OM	800980			
S83C51FA24	R OM	801001			
S83C51FA33	R OM	801026			
S87C196KB16		802539			
S87C196KC20		802755			
S87C196KC20	R OM	802767			
S87C196KC20	R 5130	825320			
S87C196KC2020	R 5132	829339			
S87C196KDH16		802861			
S87C196KDH20		802931			
S87C196MC16		803364			
S87C196MC16	R OM	803532			
S87C196MC16	S F81	803538			
S80C196MC16		804203			
S87C196MD16	R OM	803655			
S87C196MD16		803636			
S87C196MC16	R 9191	830047			
S87C196MC16	R 9121	814599			
S87C196MC16	R 9133	816153			
S87C196MH16	R 1830	847863			
S87C196MH	R 1838	849216			
S87C196MH16		803677			
S87C196MH16	R 6500	803685			
S87C196MH16	R OM	803691			
S87C196MH16	S F81	803697			
S80C196MH16		804227			
S87C51FA116	S F76	804439			
S87C51FA24	S F76	810749			
S87C52116	S F76	810770			
TS87C51FA24	S F76	810982			
TS87C51FA116	S F76	811518			
S87C58116	S F76	810734			
TS87C51FB116	S F76	812058			
S87C58116	R OM	801747			
S87C5824	R OM	801798			
S87C5833	R OM	801872			
TS87C51FC116	R OM	806230			
S87C51FC24	R OM	806444			
S87C51FC33	R OM	806555			
S87C51FB24	S F76	811017			
S87C51FB33	S F76	811019			
S87C51FC24	S F76	811081			
S87C51FC116	S F76	806104			
S87C51FC116	R OM	806098			
S87C51FB33	R OM	805643			

Pre-Conversion Product Code	Pre-Conversion Spec/ROM	Pre-Conversion MM#	Post-Conversion Product Code	Post-Conversion Spec/ROM	Post-Conversion MM#
S87C51FB24	R OM	805563			
S87C51FB116	S F76	805377			
TS87C51FB116	R OM	805433			
S87C51116	S F76	823331			
S87C51RA24	R OM	823403			
S87C51RA116		806989			
S87C51RA116	R OM	806995			
TS87C51RA116		807033			
TS87C51RA116	R OM	807041			
S87C51RA24		807154			
TS87C51RA24		807166			
TS87C51RA24	R OM	807171			
S87C51RB116		807279			
S87C51RB116	R OM	807282			
TS87C51RB116		807285			
TS87C51RB116	R OM	807288			
S87C51RB24		807314			
S87C51RB24	R OM	807316			
TS87C51RB24		807322			
TS87C51RB24	R OM	807324			
S87C51RC116		800221			
S87C51RC116	R OM	800228			
TS87C51RC116		800237			
TS87C51RC116	R OM	800249			
S87C51RC24		800375			
S87C51RC24	R OM	800384			
TS87C51RC24		800417			
TS87C51RC24	R OM	800427			
S80C51RA116		804523			
TS80C51RA116		804534			
S80C51RA24		804592			
TS80C51RA24		804603			
S87C54116	S F76	810369			
S87C5424	S F76	810712			
SB80C186EB13		808818			
SB80L186EB13		808880			
SB80L186EB16		806105			
SB80C186EB25		802905			
SB80C186EB20		802869			
SB80C186EC20		802939			
SB80C186EC25		802965			
SB80C186EC13		808819			
SB80L186EC13		809626			

Pre-Conversion Product Code	Pre-Conversion Spec/ROM	Pre-Conversion MM#	Post-Conversion Product Code	Post-Conversion Spec/ROM	Post-Conversion MM#
SB80C186XL12		808823			
SB80C186XL20		808824			
SB80C186XL25		808825			
SB80L188EB16		806175			
SB80L188EB13		806143			
SB80C188EB13		803520			
SB80C188EB20		803555			
SB80C188EB25		803604			
SB80C188EC13		803618			
SB80C188EC20		803644			
SB80L188EC13		806197			
SB80C188EC25		808828			
SB80L188EC16		809627			
SB80C188XL25		803908			
SB80C188XL12		803769			
SB80C188XL20		803856			
SB80C196KC20		811735			
SB80C196NU40		804308			
SB80C196NU50		804321			
SB87C196KC20		802774			
SB87C196KC20	R OM	802781			
SB87C196KDH20		802938			
TS80C186EB20		802885			
S80C186EB25		802897			
TS80C186EB13		802853			
S80L186EB16		806099			
TS80L186EB13		806087			
TS80L188EB13		806156			
S80L188EB16		806169			
TS80C188EB13		803549			
TS80C188EB20		803586			
S80C188EB25		803598			
U83C196MC16	R OM	828960			
U83C196MH16	R OM	828981			
U8QC196MH16	R OM	823488			
U87C196MH16		803703			
U87C196MH16	R OM	803710			
U87C196MH16	S F81	803716			

Reference Documents / Attachments: